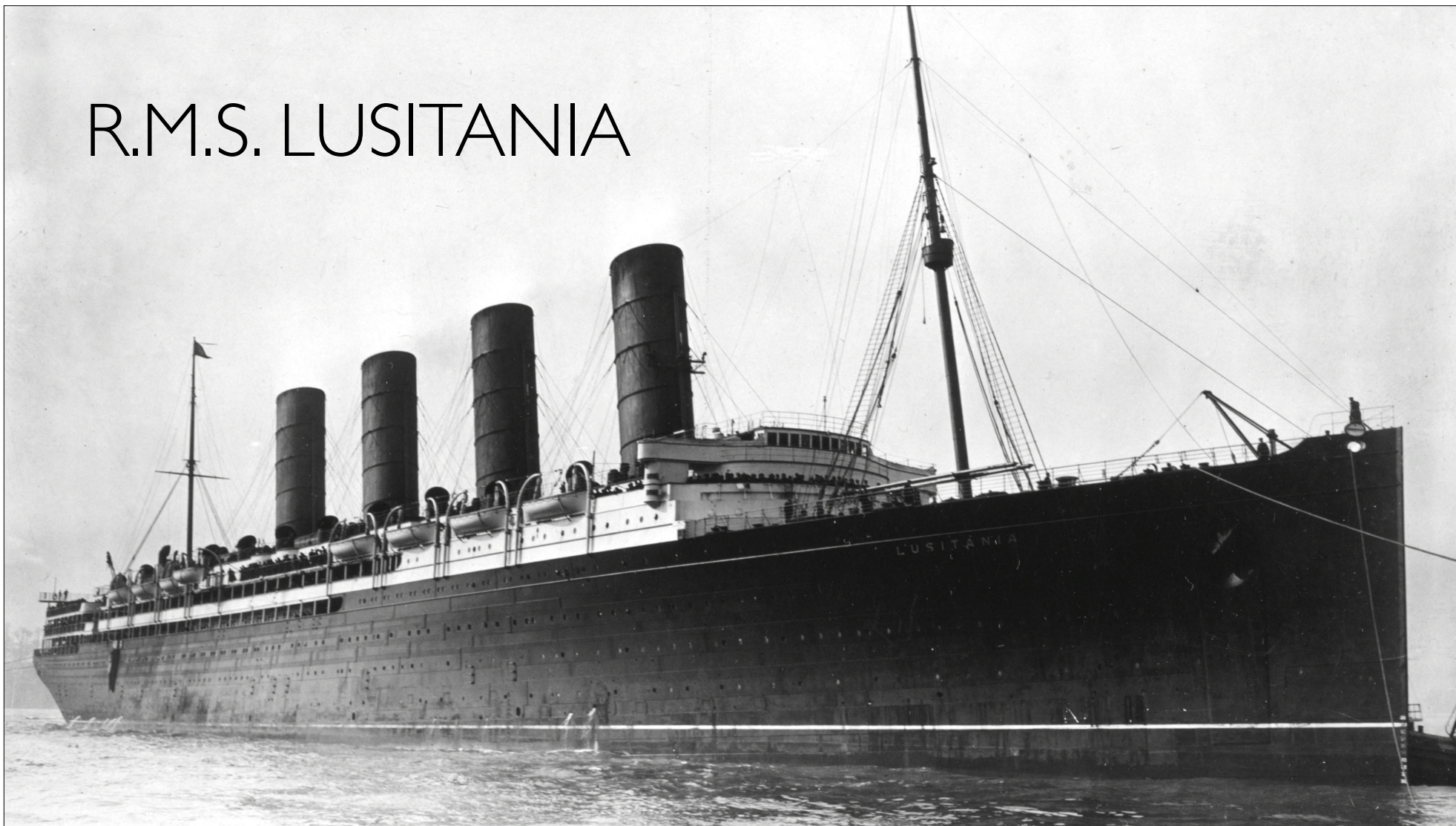
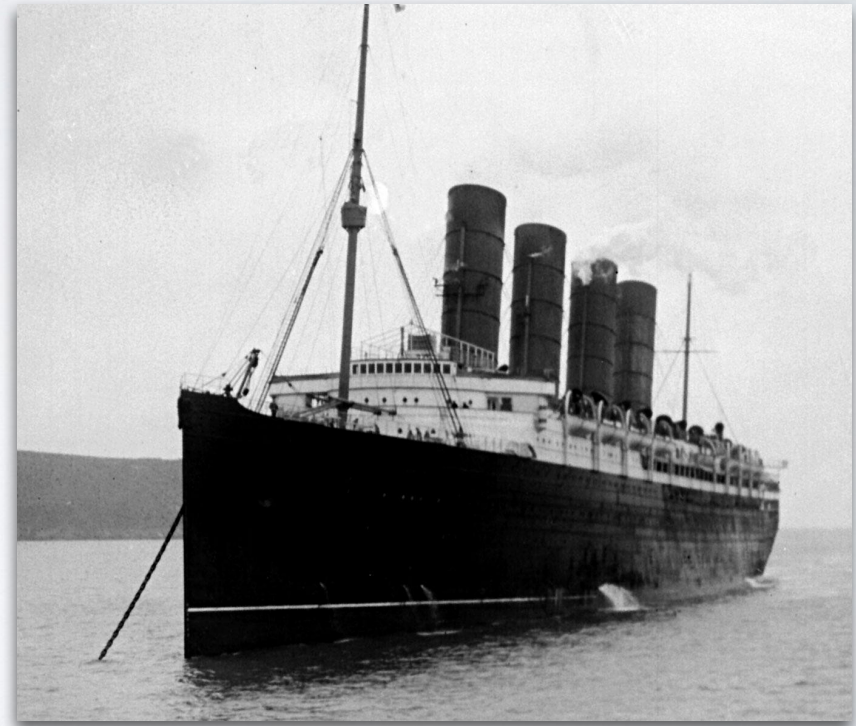


R.M.S. LUSITANIA



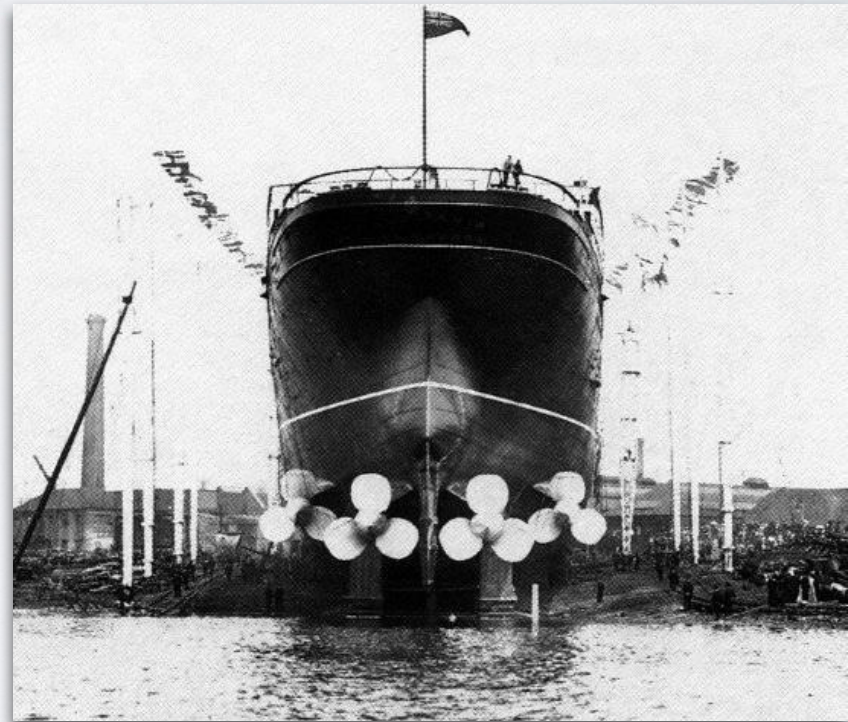
R.M.S. LUSITANIA

- The Lusitania was a British ocean liner that was launched by the Cunard Line in 1906
- At the time it was the largest ocean liner



R.M.S. LUSITANIA

- Vessel Statistics:
 - Length: 787 feet
 - Beam: 87 feet
 - Draft: 34 feet
 - Propellers: 4
 - Top Speed: 26 knots



R.M.S. LUSITANIA

- Vessel Statistics: (continued)
 - Staterooms: 2198
 - First Class: 552
 - Second Class: 460
 - Third Class: 1,186



R.M.S. LUSITANIA

- Before the war the Lusitania was used to ferry goods and people between the United States and England
- Very popular because of her speed and luxurious accommodations



R.M.S. LUSITANIA

- After World War I began in 1914, ocean voyages became extremely dangerous



R.M.S. LUSITANIA

- Each side hoped to blockade the other and prevent war materials from getting through
- German U-boats stalked British waters looking to sink enemy ships



R.M.S. LUSITANIA

- The Lusitania was thought as unsinkable because of her speed capabilities
- On May 1, 1915 she left with the intent of delivering food and passengers to England, in spite of threats by German authorities



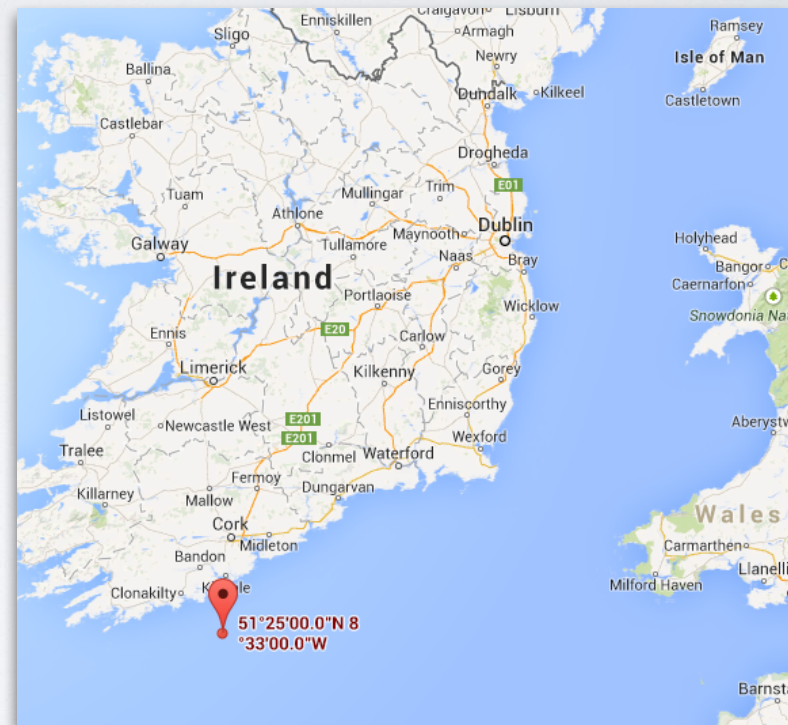
R.M.S. LUSITANIA

- On May 7, 1915, Captain William Thomas Turner slowed the Lusitania down because of fog and traveled in a predictable line



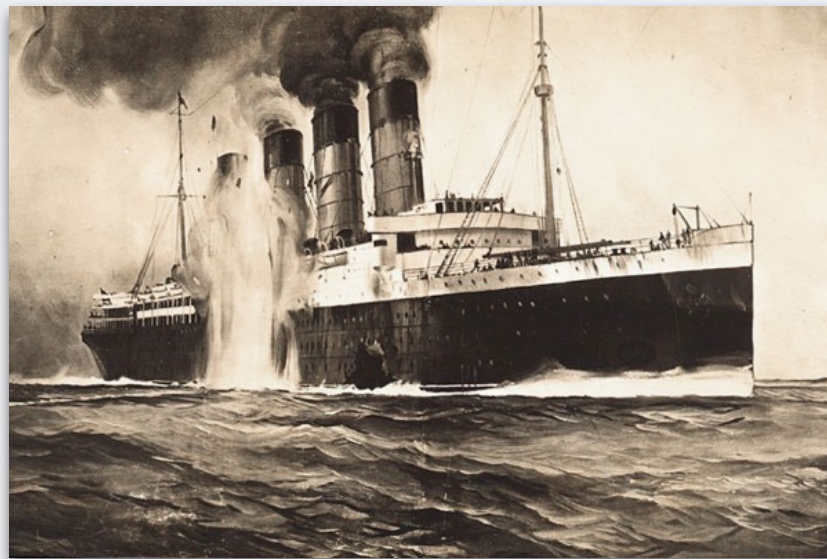
R.M.S. LUSITANIA

- 14 miles off the coast of Ireland a German U-boat spotted and targeted the Lusitania



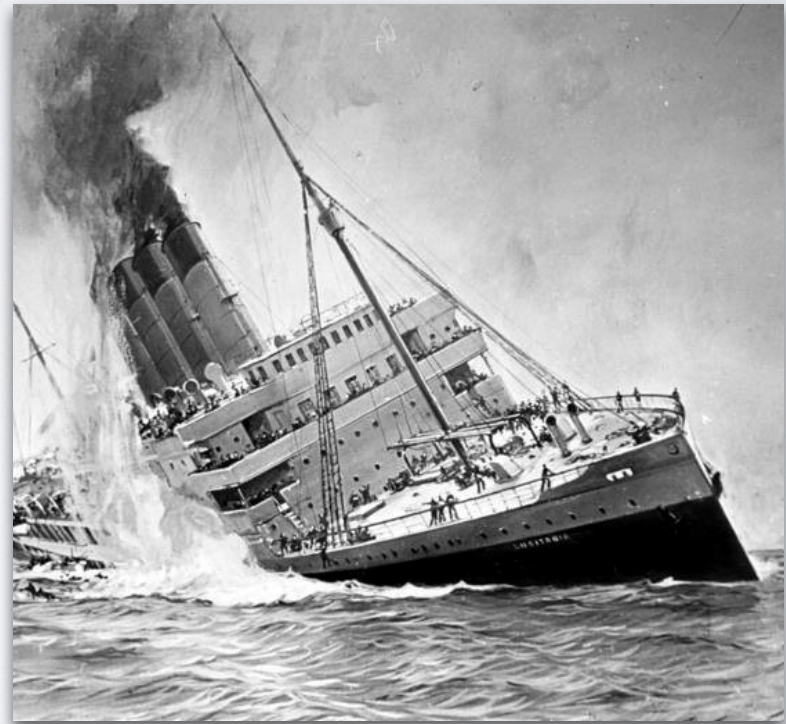
R.M.S. LUSITANIA

- At 1:40 pm a torpedo struck the starboard side of the Lusitania



R.M.S. LUSITANIA

- There was a large explosion, larger and muffled, that seemed to come from the bottom of the ship
- The ship lost power and steering and tilted to the right side at an angle of 25°

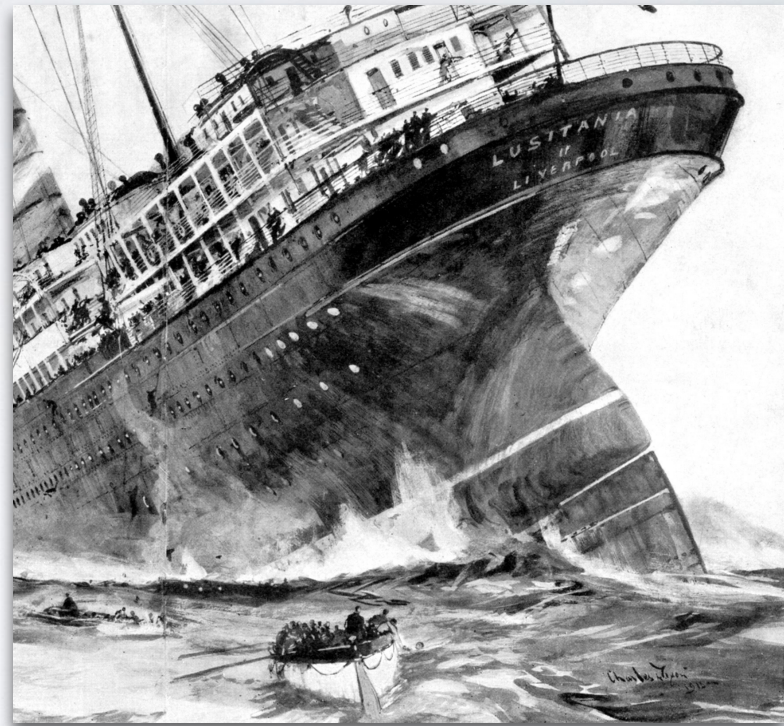


R.M.S. LUSITANIA

- Although there were enough life boats for all the passengers and crew there were problems:
 - The list of the ship didn't allow for the lifeboats to be launched
 - The starboard-side boats were swung out so far and passengers had to jump from the deck to the lifeboats
 - Some were damaged from the torpedo

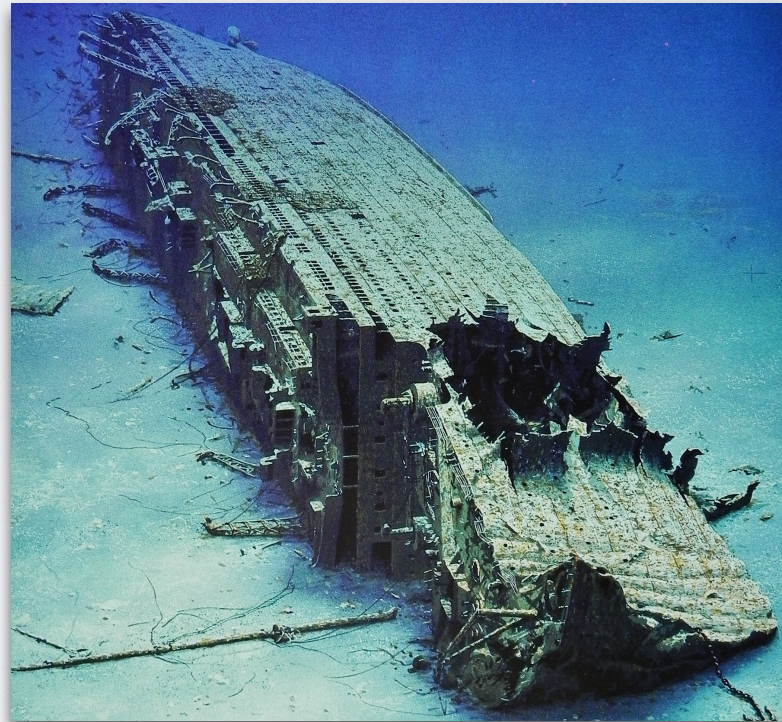
R.M.S. LUSITANIA

- The Lusitania sank at 2:00 pm in 90 meters of water
 - Since the Lusitania was 239 meters long the bow hit the ocean floor while the stern was still in the air



R.M.S. LUSITANIA

- Sinking Statistics:
 - Total Passengers: 1959
 - Surviving Passengers: 761



R.M.S. LUSITANIA

- Sinking Statistics: (continued)
 - The sinking of the Lusitania contributed in the American involvement into WWI

